

# TELAWIZE COMPANY PROFILE CIVIL AND STRUCTURAL CONSULTING ENGINEERS

- We are professional in all aspects of our work, delivering outstanding quality products and projects, on time and cost effectively.



**TELAWIZE (PTY) LTD**  
ENGINEERS & PROJECT MANAGERS

**“ WE AIM TO BE A LEADING FORCE WITHIN  
THE ENGINEERING DESIGN AND PROJECT  
MANAGEMENT INDUSTRY ”**



# TABLE OF CONTENTS

All engineering aspects of design and project management are well established in our company.

**1 Introduction\_\_\_\_\_ 1-3**

**2 About Us\_\_\_\_\_ 4-5**

**3 Our Services\_\_\_\_\_ 6-7**

**4 Project Portfolio\_\_\_\_\_ 8-13**





## INTRODUCTION

Telawize (Pty) Ltd was initially formed in April 2010 with the divestiture of GFC Consulting Engineers. Commencing operating officially in 2012, the company has successfully completed numerous projects within the civil and structural engineering industry fields.

The long-term vision of the company is to establish a footprint within South Africa, investing in our people as well as growing the business into the whole of Africa.

We offer a complete hands-on approach ensuring projects are concluded as per clients' requirements.

Telawize's B-BBEE score was verified as a Level Two Contributor with a 125% BEE procurement recognition level in August 2021.

Telawize is situated in Erasmusrand, Pretoria and offers specialised services in the civil and structural engineering disciplines.



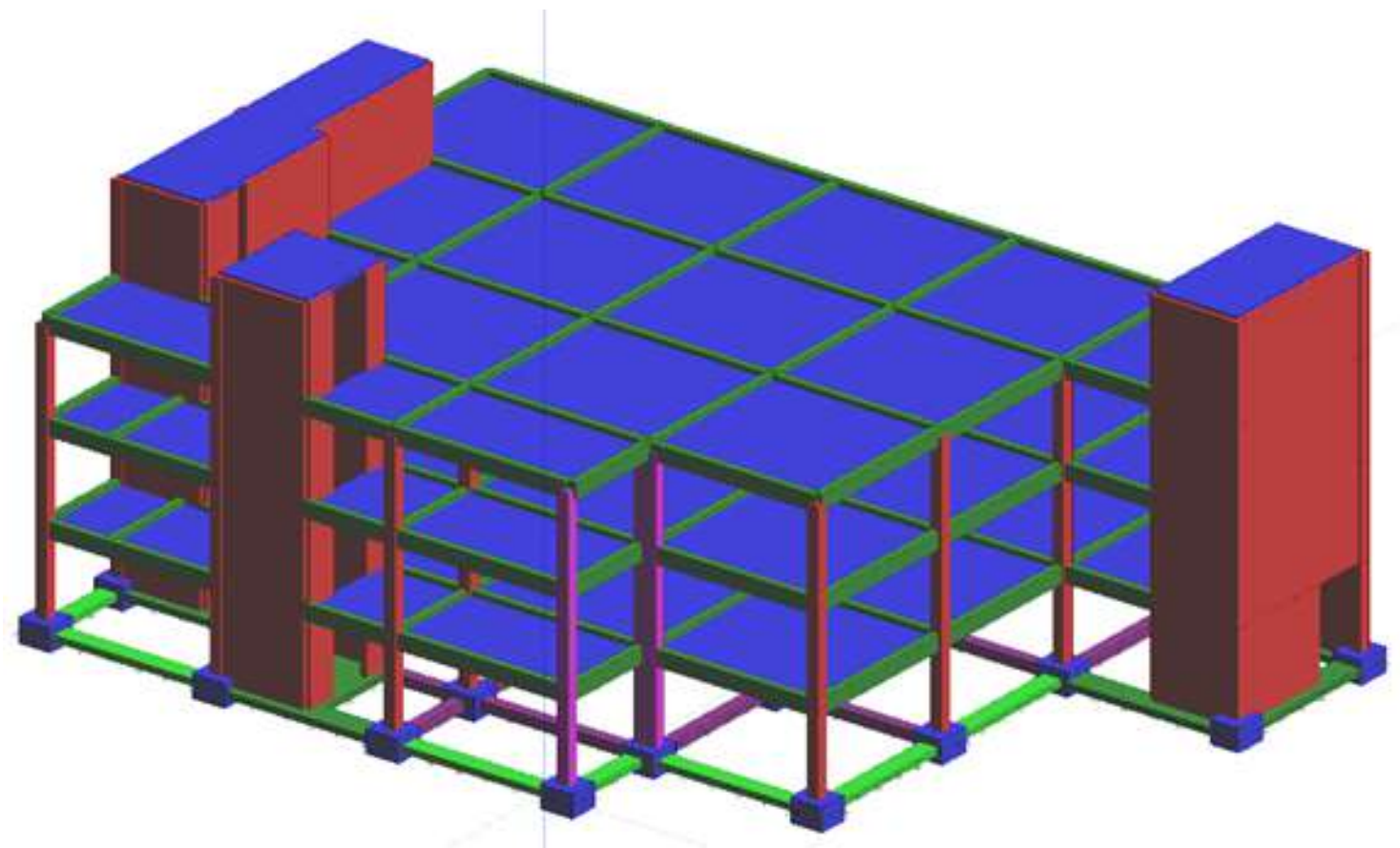
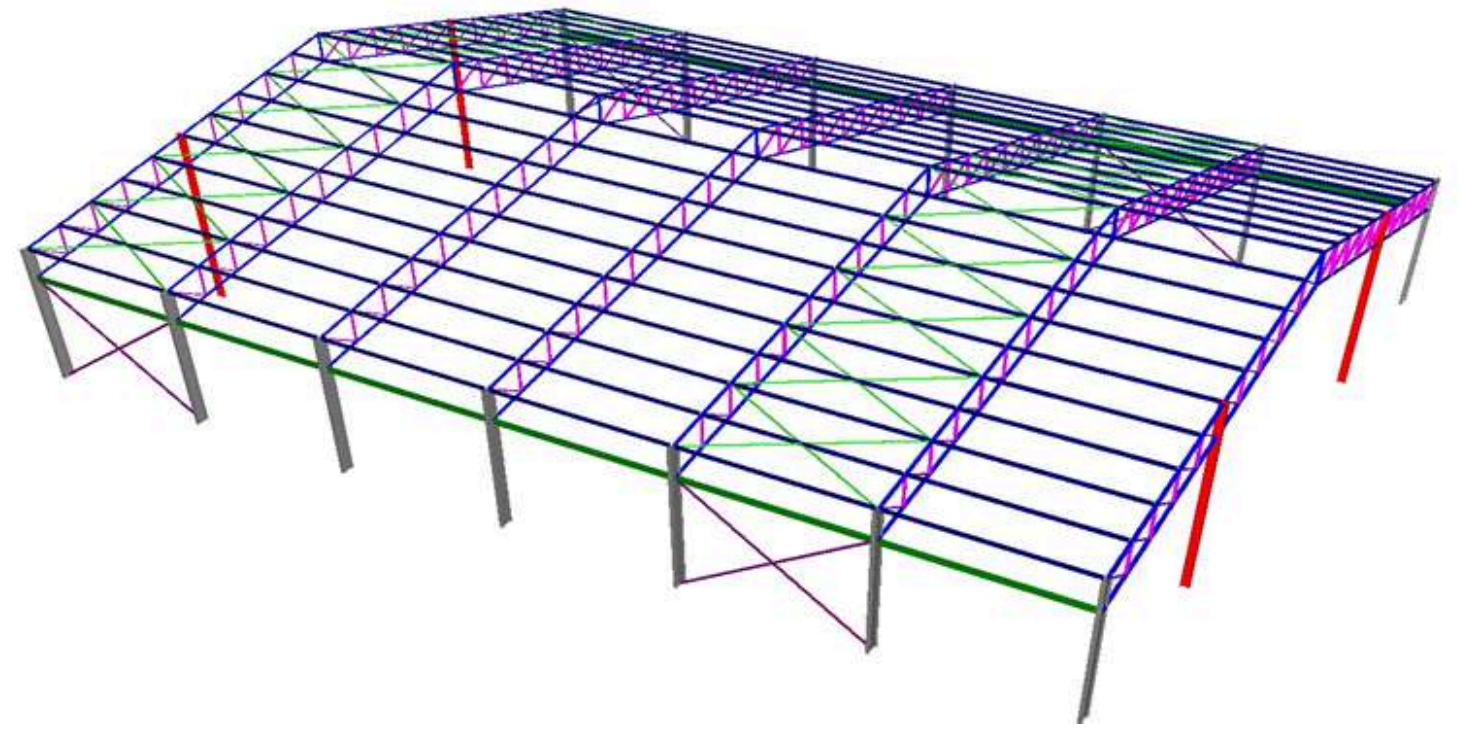
## TELAWIZE COMPANY PROFILE



### GAWIE COMBRINCK

Gawie is a professional Civil and Structural Engineer with 28 years' experience, as well as a pilot. His involvement in the property development and construction environment has been valuable in procuring and developing new business.

As a private pilot for the past 24 years with about 7000 flying hours to his credit this is extremely useful for conducting supervision of various projects all over South Africa flying the planes that the company own.



# OUR TEAM



**GAWIE COMBRINCK**  
MANAGING DIRECTOR



**AMANDA VAN DER MERWE**  
STRUCTURAL TECHNICIAN



**SONIA SCHEEPERS**  
OFFICE MANAGER



**DAVID H LAPANE**  
CIVIL ENGINEERING  
TECHNOLOGIST



**LOUIS NEL**  
QUANTITY SURVEYOR



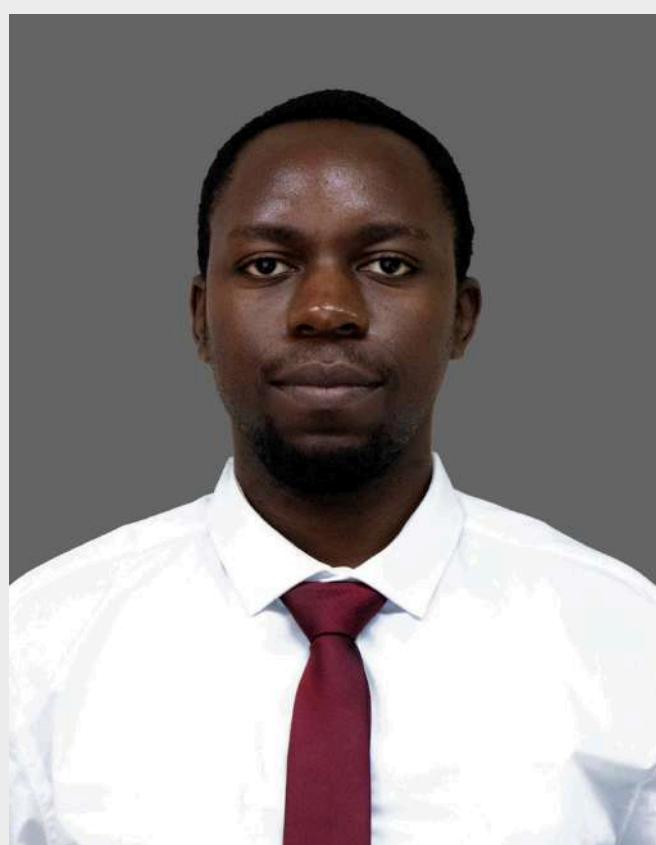
**JOHAN PRINS**  
CIVIL ENGINEERING  
DRAUGHTSMAN



**CULLEN ANDREWS**  
STRUCTURAL  
TECHNOLOGIST



**SAHL ABDOOL**  
QUANTITY SURVEYOR



**ANESU MUCHENJE**  
ARCHITECTURAL  
TECHNOLOGIST

# ABOUT US

We provide engineering design and project management solutions to meet the unique requirements of our wide spectrum of clients within South and Southern Africa.



## OUR PEOPLE

Human capital is the measure of the economic value that an employee provides, through their knowledge, skills, and abilities.

Telawize's staff complement includes professional civil, structural and agricultural engineers, engineering technologists, architects, technicians, administrative personnel and site supervisors.

We provide engineering design and project management solutions to meet the unique requirements of our wide spectrum of clients within South and Southern Africa.



## OUR VISION

We aim to be a leading force within the engineering design and project management industry. The basis of our business is the provision of engineering design and project management solutions to meet the unique requirements of our wide spectrum of clients. We champion the inclusion of formerly disadvantaged communities in the engineering design and project management industry to bring social and economic improvements to our members, staff and these communities.

## OUR MISSION

- To be professional in all aspects of the work.
- Deliver products with outstanding quality, on time and cost effectively.
- Create a harmonious working atmosphere by treating all clients, staff, members and working associates fairly, with respect and dignity, and
- Allow for personal growth of all staff by creating a pleasant working atmosphere, encouraging training, and stimulating development.

## OUR SPECIALISATION

- Structural steel
- Reinforced Concrete
- Water Retaining structures
- Timber Structures
- Civil Services
- GSM & Data Centre design
- Transmission Foundation Design
- Mining Infrastructure

# OUR SERVICES

Telawize's services range from civil and structural design, site supervision and project management, GSM cellular infrastructure as well as property development and building of transmission lines.

This includes estimating and budgeting; project planning; engineering design and detailing/drawing; project management (time, cost and quality) and procurement assistance.

## CIVIL WORKS

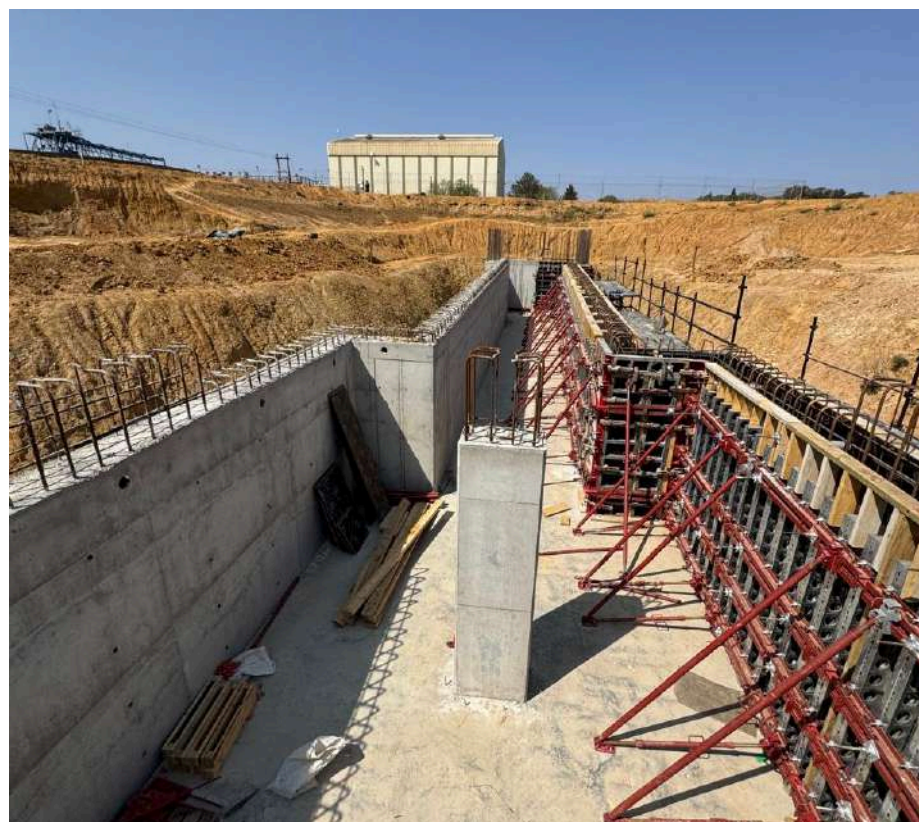
Designs for Municipal infrastructure, Mining infrastructure and Independent Developers. This includes:

- Roads and Stormwater
- Water and Sanitation Projects
- Contract Administration and Project Management
- Quality Management
- Project Specifications
- Earthworks



# STRUCTURAL

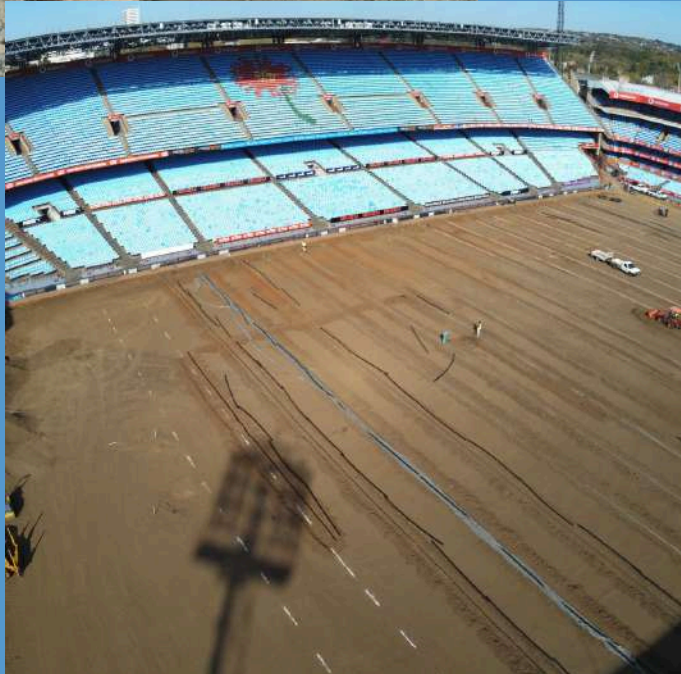
Townhouse and residential complex developments; low-cost buildings for residential and agricultural uses; steel and concrete industrial buildings; municipal services, bulk earthworks; dynamic analysis & foundation design for Turbine Generators and Power Stations; call centre and computer centre structural design (BSC, MSC structural design)



# GSM CELLULAR COMMUNICATION INFRASTRUCTURE



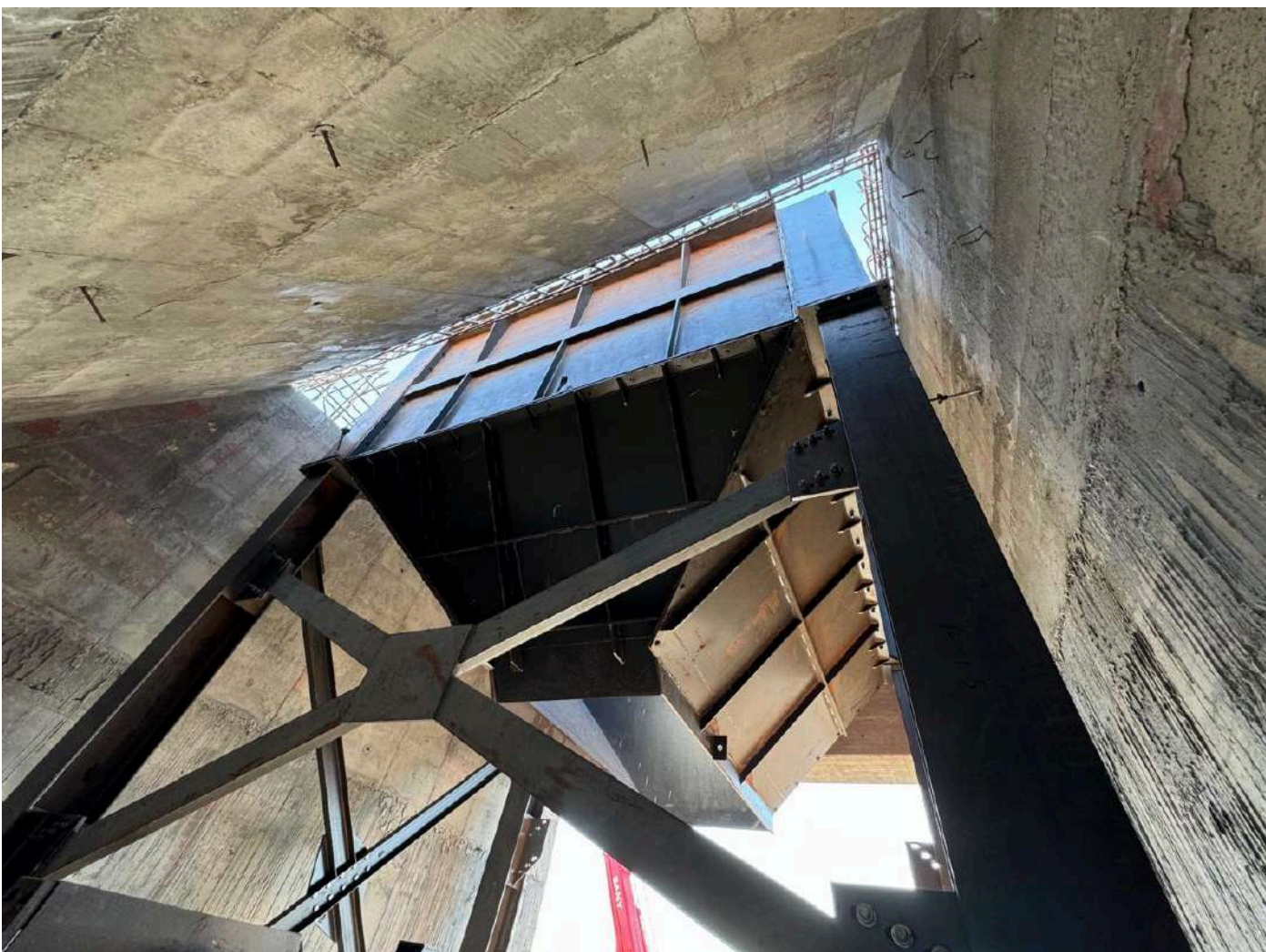
Included here is site assessment and evaluation; site design drawings, rooftop & greenfield; antennae support structure design; lattice towers for GSM and telecommunication purposes



# PROJECT PORTFOLIO

Telawize's projects range from civil and structural design, site supervision and project management, GSM cellular infrastructure as well as property development and building of transmission lines.

# WAREHOUSES & INDUSTRIAL DEVELOPMENTS



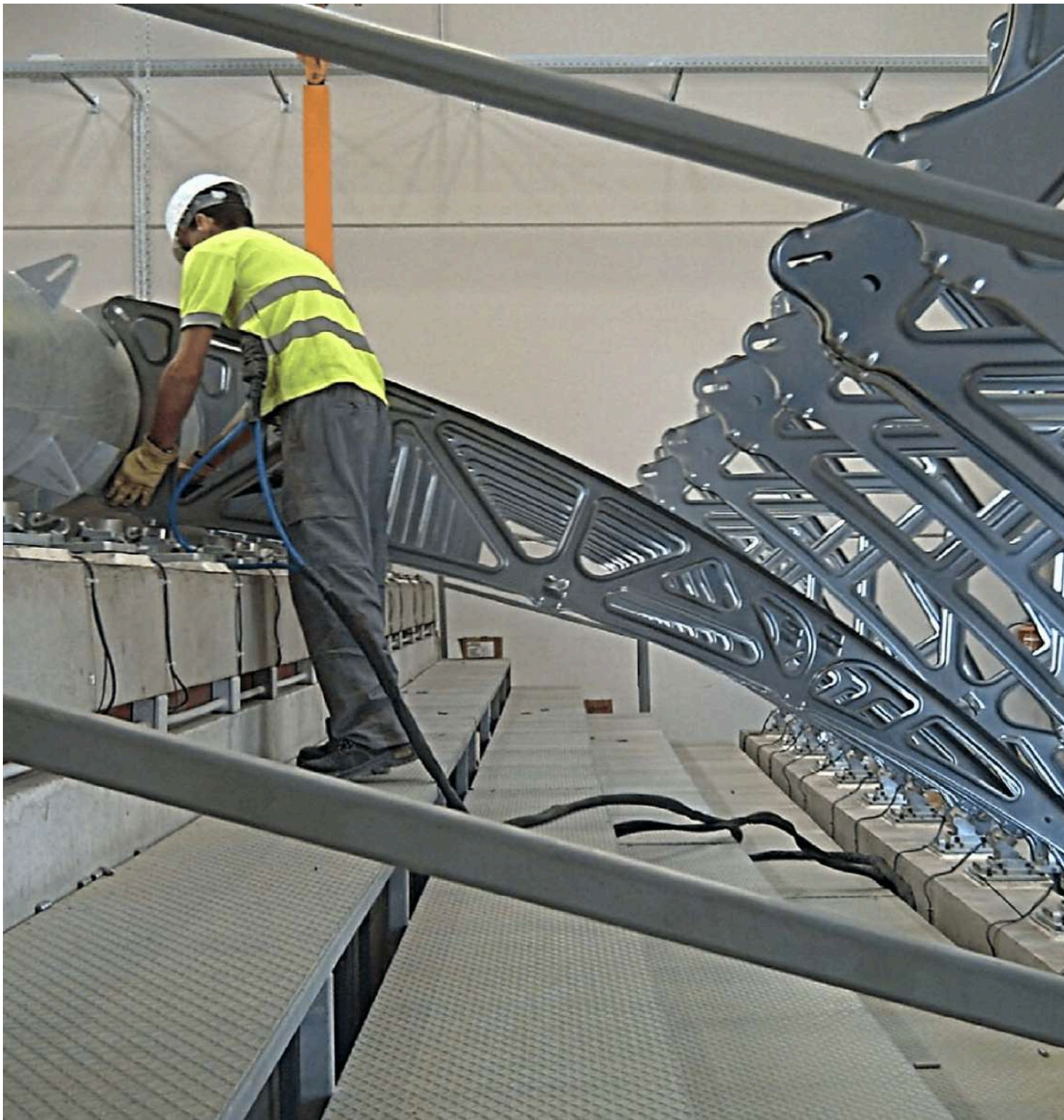
# LOURENSFORD MOTOR DISPLAY ROOM

Telawize (Pty) Ltd was appointed as the Structural engineering company to design the 12 U-shaped precast concrete columns ensuring structural integrity which have been used as the primary anchor for the construction of a major display room.



# BOKPOORT, POFADDER & UPPINGTON RENEWABLE PROJECTS

Telawize in partnership with Increscendo (Spain) were involved in the design and supervision of solar field platforms, access roads and processwater dams for the renewable projects.



# KATHU SOLAR 1



Telawize in partnership with Increscendo (Spain) project managed the design and construction of the solar field and various components of the molten salts section of the power for the Kathu Solar 1 Project.

# CLINICS AND SCHOOLS

Telawize has completed 77 clinics in Eastern Cape, Mpumalanga, Gauteng, Kwa-Zulu Natal and the Free State and 17 in Limpopo as well as 2 new schools in the Gauteng area. Funded by USAID, facilitated by Anova Health and constructed by FSM.



# GET IN TOUCH WITH US

## ADDRESS

Suite 14, Waterkloof Rand Centre (Office Park) Cnr Rigel Avenue and Buffelsdrift Road Erasmusrand, Pretoria, Gauteng, South Africa

## CONTACT

+27 12 347-6299

[info@telawize.co.za](mailto:info@telawize.co.za)

[www.telawize.co.za](http://www.telawize.co.za)

